

STAHLMAN PARK BUILDING
 2211 BLUEWATER HIGHWAY
 SURFSIDE BEACH, TEXAS



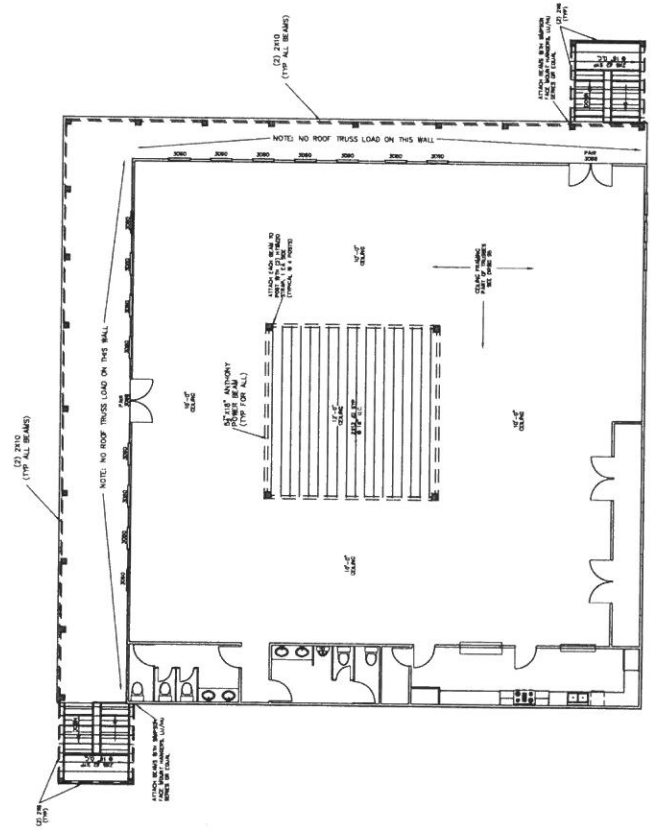
S4

REV: 1
 DATE: 1-19-09

Hendricks Engineers, Inc.
 HOUSTON
 16000 STUDENT AIRLINE #135
 CLUTE, TEXAS 77531
 (979) 265-5383
 SPRING, TEXAS 77379
 (281) 374-8755

CEILING FRAMING PLAN
 SCALE: 1/8" = 1' 0"

ISSUED FOR
 REFERENCE ONLY



SEE ARCHITECTURAL DRAWINGS FOR DIMENSIONS NOT SHOWN

**STAHLMAN PARK BUILDING
2211 BLUEWATER HIGHWAY
SURFSIDE BEACH, TEXAS**



S5

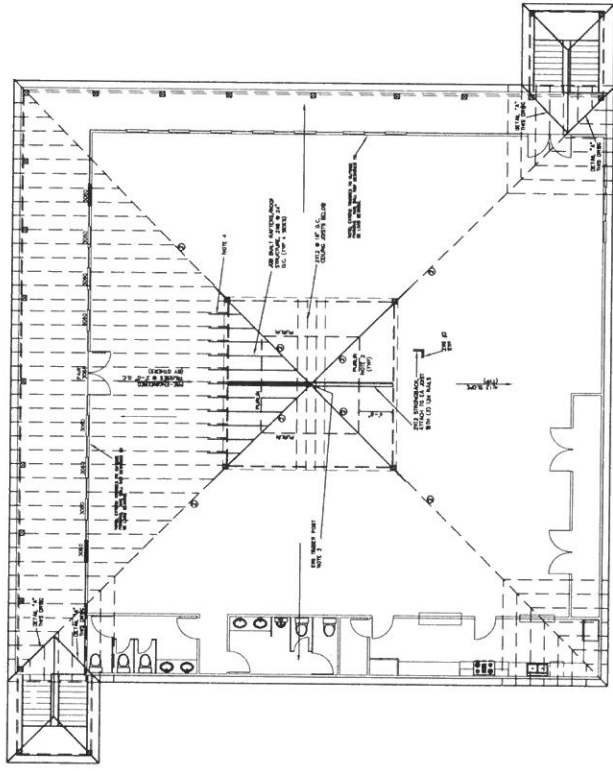
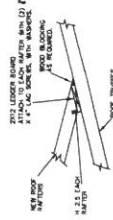
REV: 0
DATE: 11-11-09

Hendricks Engineers, Inc.
HOUSTON
1227 HWY. 332, SUITE 9
SPRING, TEXAS 77379
(281) 374-8755
9100 STEUBER AIRLINE #135
CLUTE, TEXAS 77531
(979) 265-3383

- LEGEND:
- PURLINS
 - ⊙ RIDGE
 - ⊙ HP
 - ⊙ VALLEY

NOTES: ROOF FRAMING PLAN

1. RAFTERS ARE 2 X 6 @ 16" O.C. R/ OR #3 S/P UNLESS NOTED.
2. PURLINS, BRACING AND CONNECTORS, SEE DETAIL 622020.
3. STRAP EACH HP RAFTER TO GABE POST WITH CS24 STRAPPING PER DETAIL 625150 (SIMILAR). STRAP BOTTOM OF POST TO STRONGBACK WITH L5T416 STRAP.
4. OVERLAP HP RAFTER 3'-0" ONTO TRUSS (OR BUTT TO TRUSS WITH 2X6X6 SPICE PLATE). INSTALL 104 X 3" NAILS, 3 PER ROW, ROWS @ 6" O.C.
5. ROOF BEGONG TO BE 7' (MIN) OSE, NAILED PER DETAIL 631022.
6. OUTLOOKERS TO BE 2X4 @ 24" O.C.



ISSUED FOR
REFERENCE ONLY

**ROOF FRAMING PLAN
SCALE: 1/8" = 1'-0"**

SEE ARCHITECTURAL DRAWINGS FOR DIMENSIONS NOT SHOWN